



SURFACE MOUNT SCHOTTKY BARRIER DIODE

BAT46W

VOLTAGE RANGE
CURRENT

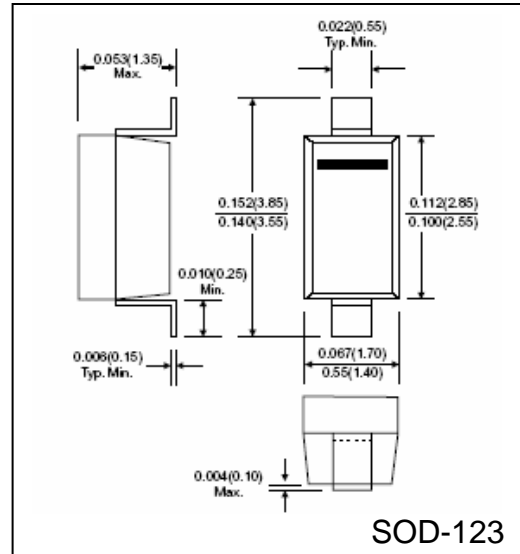
75 Volts
150 mA

FEATURES

- Fast Switching speed
- General purpose switching applications

MECHANICAL DATA

- Case: SOD-123
- Terminals: Solderable per MIL-STD-202 Method 208C
- Polarity: Color band denotes cathode end
- Weight: 0.00035 ounce, 0.01 gram, approx.



MAXIMUM RATINGS AND ELECTRICAL CHARACTERISTICS

- Ratings at 25°C ambient temperature unless otherwise specified

	SYMBOLS	BAT46W	UNIT
Maximum Repetitive Peak Reverse Voltage	V_{RM}	100	Volts
Forward Continuous Current	I_{FM}	150	mA
Non-Repetitive Peak Forward Surge Current @ $T = 1.0\mu S$ $T = 1.0S$	I_{FSM}	2.0 1.0	Amps
Maximum Forward Voltage @ 0.1mA 10mA 250mA	V_F	0.25 0.45 1.0	Volts
Maximum Leakage Current, (Note 1) @ $V_R = 1.5V$ $V_R = 1.5, T_J = 60^\circ C$ $V_R = 10V$ $V_R = 10V, T_J = 60^\circ C$ $V_R = 50V$ $V_R = 50V, T_J = 60^\circ C$ $V_R = 75V$ $V_R = 75V, T_J = 60^\circ C$	I_R	0.5 5.0 0.8 7.5 2.0 15 5.0 20	μA
Power dissipation (Note 1)	P_{TOT}	200	mW
Typical Junction Capacitance, $V_F = 1V, f = 1MHz$	C_J	6.0	pF
Typical Thermal Resistance	$R_{\theta JA}$	300	$^\circ C/W$
Operating Junction Temperature Range	T_J	(-55 to +125)	$^\circ C$
Storage Temperature Range	T_{STG}	(-55 to +150)	$^\circ C$

Notes:

1. Valid provided terminals are kept at ambient temperature



RATINGS AND CHARACTERISTIC CURVES BAT46W

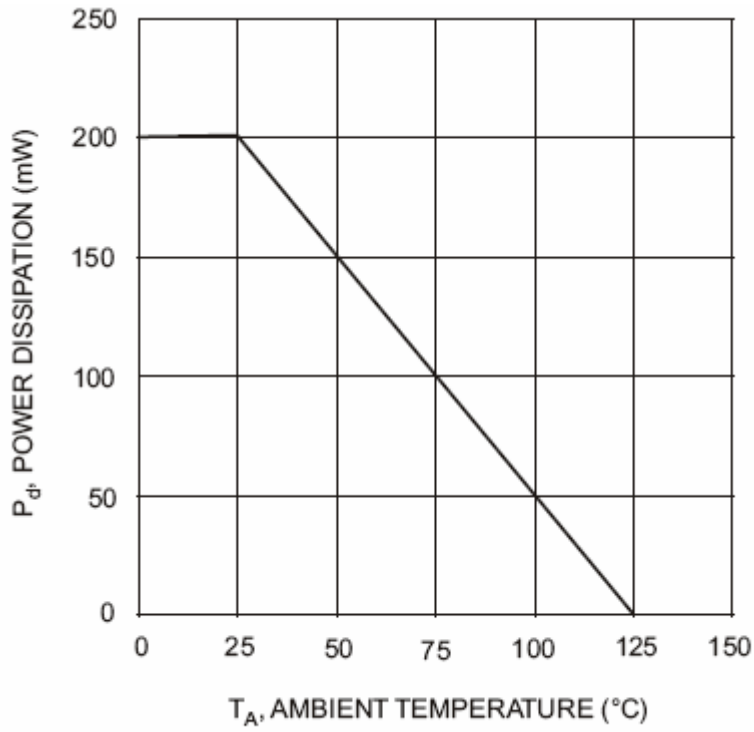


Fig.1 Power Derating Curve
