

FEATURES:

- Sharp click feel with a positive tactile feedback. Due to a small movement distance (stroke), user experiences distinct sensation when the switch “clicks” into place.
- Ultraminiature and light weight structure suitable for high density mounting. Economic but high reliability.
- Insert molding in the contact with special treatment prevents flux build-up during soldering and permits auto-dipping.

MATERIAL:

- Cover: Stainless steel.
- Base: UL94V-0 Nylon Thermoplastic.
- Stem: UL94V-0 Nylon Thermoplastic.
Color: Black(100gf), Brown(160gf), Red(260gf), Salmon(320gf), Yellow(520gf).
Silicone rubber color: Red(300gf)
- Contact Disc: Phosphor bronze with silver cladding.
- Terminal: Brass with silver plated.
- Cap: Thermoplastic ABS.

Soldering Process

▲ Hand Soldering : Use a soldering iron of 30 watts, controlled at 350° approx. 5 seconds while applying solder

▲ Wave Soldering: Recommended solder temperature at 500°F(260°C)max. 5 seconds subject to PBC 1.6mm thickness (For through hole type)

SPECIFICATIONS:

MECHANICAL:

- Operation Force:

520 ± 130gf	Yellow	(Y)
320 ± 80gf	Salmon	(S)
260 ± 50gf	Red	(R)
160 ± 50gf	Brown	(N)
100 ± 50gf	Black	(K)
- Stop Strength: Max 3kgf vertical static load continuously for 15 seconds.
- Stroke: (12x12) 0.35 ± 0.1mm
(6x6) 0.25 + 0.2mm
- 0.1mm
- Operating Temperature Range: -25°C to +70°C
- Storage Temperature Range: -30°C to +80°C
- Vibration Test: MIL-STD-202F METHOD 201A.
Frequency: 10-55- 10Hz/1 minute.
Directions: X, Y, Z, three mutually perpendicular directions.
Time: 2 hours each direction.
High reliability.
- Shock Test: MIL-STD-202F METHOD 213B
CONDITION A.
Gravity: 50G (peak value), 11 msec.
Directions and times: 6 sides and 3 times in each direction.
High Reliability.

ELECTRICAL:

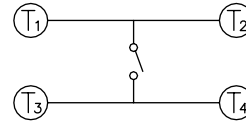
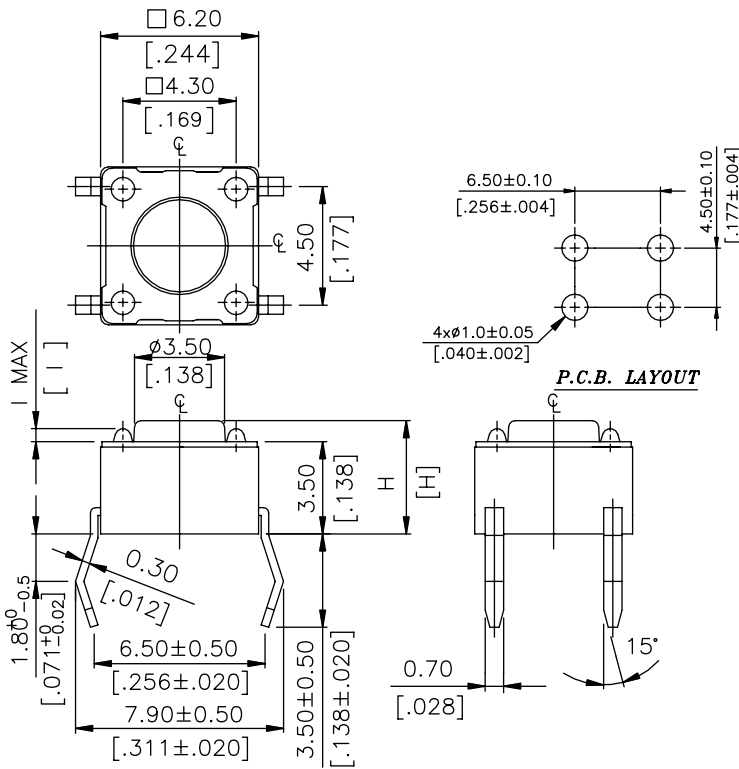
- (6X6)
 - Electrical Life: 300,000 cycles for 320gf, 520gf
500,000 cycles for 260gf
1,000,000 cycles for 100gf, 160gf
- (12x12)
 - Electrical Life: 100,000 cycles for 320gf
100,000 cycles for 260gf
200,000 cycles for 160gf
- Rating: 50mA, 12VDC.
- Contact Resistance: 100mΩ max.
- Insulation Resistance: 100MΩ min. 500VDC.
- Dielectric Strength: 250VAC/1 minute.
- Contact Arrangement: 1 pole 1 throw.

Packaging:

STS-6 series: 1000pcs/bag
STS(P)-2 series: 500 pcs/bag or 40 pcs/tube

Cap Option Info Included

STS-6□1~6□6:

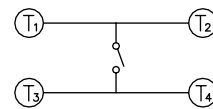
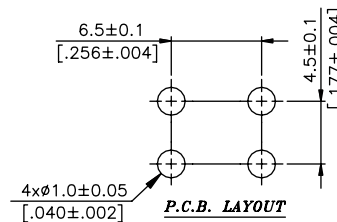
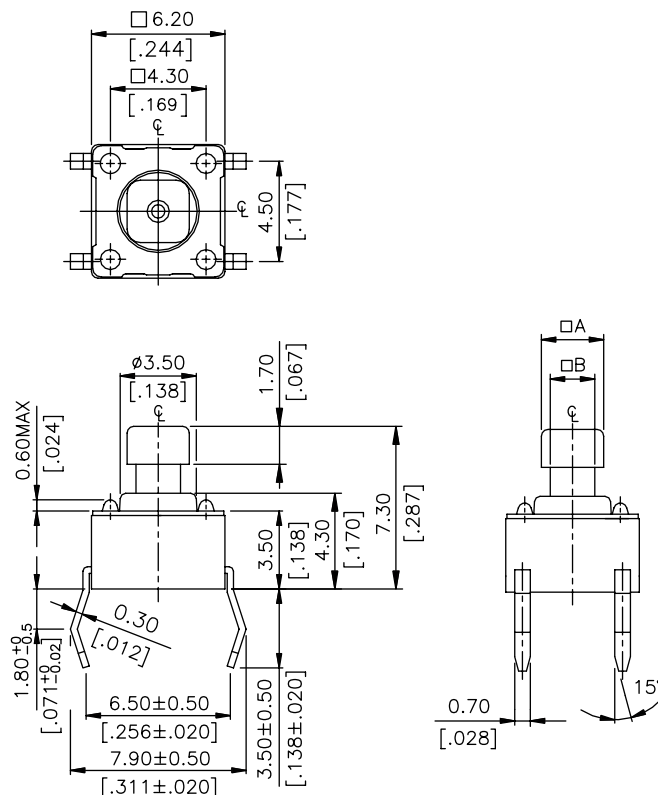


CIRCUIT DIAGRAM

Part #	I(mm)	I(inches)
STS-6□2~6□6	0.6 Max	0.0236 Max
STS-6□1	0.5 Max	0.0197 Max

Part #	H(mm)	H(inches)
STS-6□6	13.0	0.512
STS-6□5	9.5	0.374
STS-6□3	7.0	0.275
STS-6□2	5.0	0.197
STS-6□1	4.3	0.169

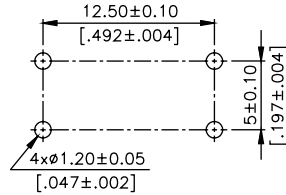
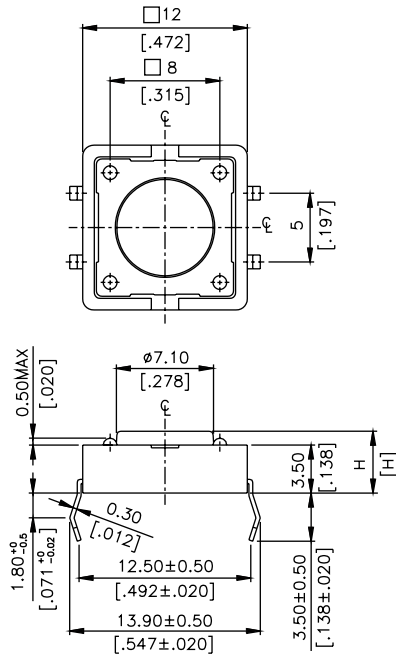
STS-6□44~6□48:



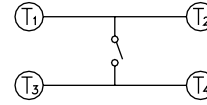
CIRCUIT DIAGRAM

Part #	Loc.	mm	inches
STS-6□44	□A	2.4	0.095
	□B	1.6	0.063
STS-6□48	□A	2.8	0.110
	□B	2.0	0.079

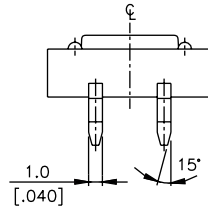
STS-2□1~2□5:



P.C.B. LAYOUT

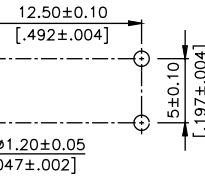
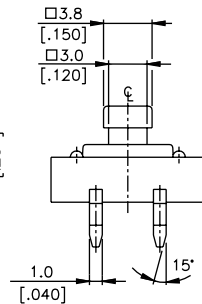
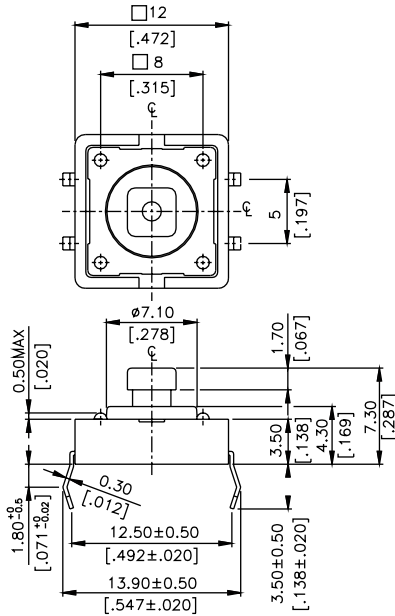


CIRCUIT DIAGRAM

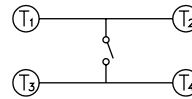


Part #	H(mm)	H(inches)
STS-2□B	12.0	0.472
STS-2□5	8.5	0.335
STS-2□A	7.5	0.295
STS-2□1	4.3	0.169

STS-2□4:

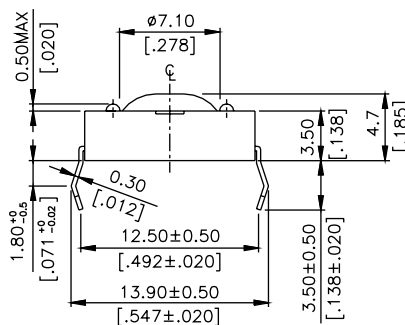
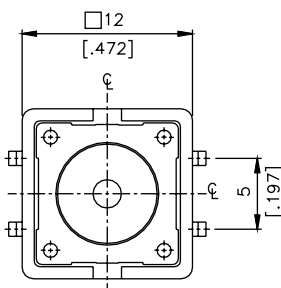


P.C.B. LAYOUT



CIRCUIT DIAGRAM

STS-2□1(063):



HOW TO ORDER:

STS □ - 6 K 1 - R □ □ - □

Plating Option:

□ = Silver

G = Gold on Contacts and Terminals

□ = Dome Phosphor Bronze

S = Stainless Steel

(12x12 K, S, Y Unavailable)

Package style:

□ = Bulk

B = Tube

Soldering:

R = Lead free

Dimension H:

6x6mm

1 = 4.3mm

2 = 5.0mm

3 = 7.0mm

44 = 7.3mm (SQ.) x 2.4mm

48 = 7.3mm (SQ.) x 2.8mm

A = 7.5mm

5 = 9.5mm

B = 12mm

6 = 13mm

12x12mm

1 = 4.3mm

4 = 7.3mm (SQ.) x 3.8mm

5 = 8.5mm

Color of Stem for Operation Force:

K = Black, 100gf

N = Brown, 160gf

R = Red, 260gf

S = Salmon, 320 gf

Y = Yellow, 520gf

NK = Black, 160gf

<12x12, K, Y Unavailable>

Prod. Size:

6 = 6x6mm

2 = 12x12mm

Post Option:

□ = No Post

P = With Post(only for 12x12)

Series:

STS = Tactile Switch

CAP PART NUMBER

SCAP - □ □ □

Cap Color:

Y = Yellow

B = Blue

R = Red

I = Ivory

K = Black

G = Green

S = Salmon

GY = Gray

Cap Type:

1 = Square

2 = Round

Prod. Size:

6 = 6x6 mm

2 = 12x12 mm