

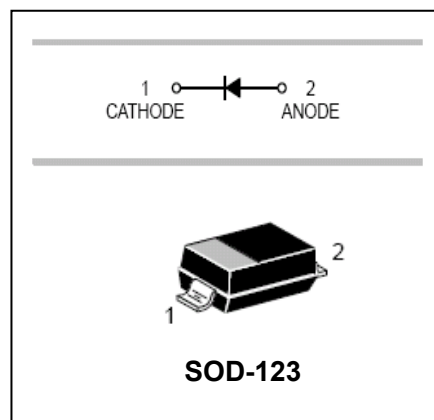
## Surface mount switching diode **BAV19W/ BAV20W/ BAV21W**

### FEATURES

- Fast Switching Speed.
- Surface Mount Package Ideally Suited For Automatic Insertion.
- For General Purpose Switching Applications.



Lead-free



### APPLICATIONS

- Surface mount fast switching diode.

### ORDERING INFORMATION

Type No.	Marking	Package Code
BAV19W	A8	SOD-123
BAV20W	T2	SOD-123
BAV21W	T3	SOD-123

**MAXIMUM RATING @ Ta=25** unless otherwise specified

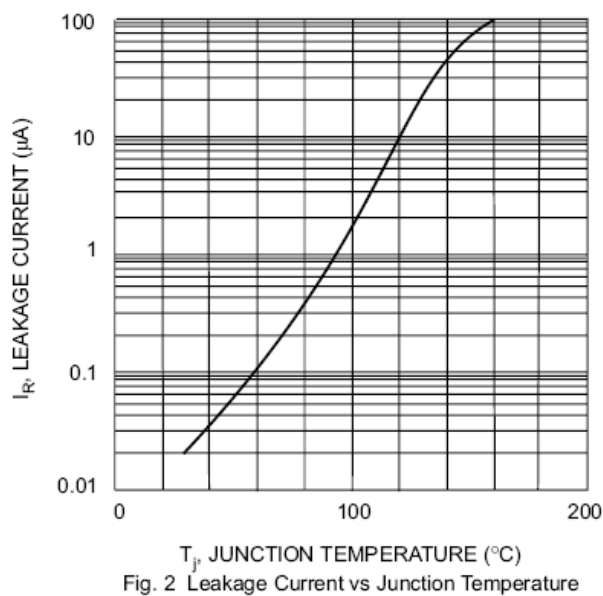
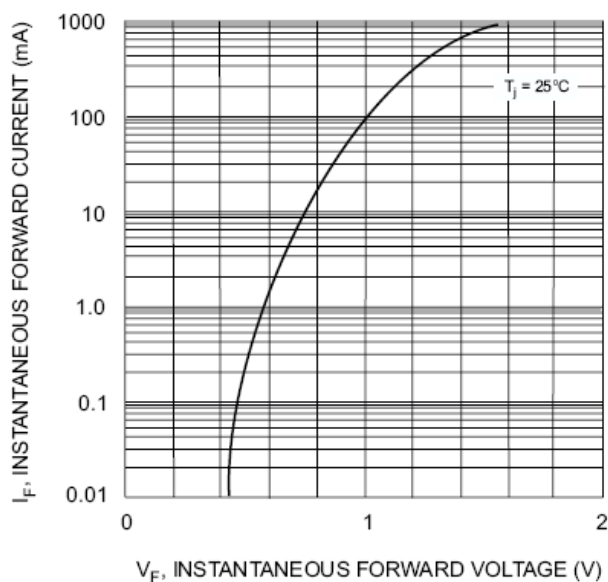
Characteristic	Symbol	BAV19W	BAV20W	BAV21W	Unit
Non-Repetitive Peak Reverse Voltage	$V_{RM}$	120	200	250	V
Peak Repetitive Reverse Voltage	$V_{RRM}$				
Working Peak Reverse Voltage	$V_{RWM}$	100	150	200	V
DC Reverse Voltage	$V_R$				
RMS Reverse Voltage	$V_{R(RMS)}$	71	106	141	V
Average Rectified Output Current	$I_o$	200			mA
Non-Repetitive Peak Forward Surge Current					
@t=1.0 $\mu$ s	$I_{FSM}$	2.5			A
@t=1.0 s		0.5			
Power Dissipation	$P_d$	250			mW
Thermal Resistance Junction to Ambient Air	$R_{\theta JA}$	500			$^{\circ}C/W$
Operating and Storage Temperature Range	$T_j, T_{STG}$	-65 to +150			$^{\circ}C$

Surface mount switching diode **BAV19W/ BAV20W/ BAV21W**

ELECTRICAL CHARACTERISTICS @ Ta=25 unless otherwise specified

Characteristic	Symbol	Min	Max	Unit	Test Condition
Reverse Breakdown Voltage BAV19W BAV20W BAV21W	$V_{(BR)R}$	120 200 250		V	$I_R=100\mu A$
Maximum Forward Voltage	$V_{F1}$ $V_{F2}$	-	1.0 1.25	V	$I_F=100mA$ $I_F=200mA$
Reverse Current BAV19W BAV20W BAV21W	$I_R$	-	0.1	$\mu A$	$V_R=100V$ $V_R=150V$ $V_R=200V$
Junction Capacitance	$C_j$	-	5.0	pF	$V_R=0, f=1.0MHz$
Reverse Recovery Time	$t_{rr}$	-	50	ns	$I_F=I_R=30mA,$ $t_{rr}=0.1 \times I_R, R_L=100\Omega$

TYPICAL CHARACTERISTICS @ Ta=25 unless otherwise specified

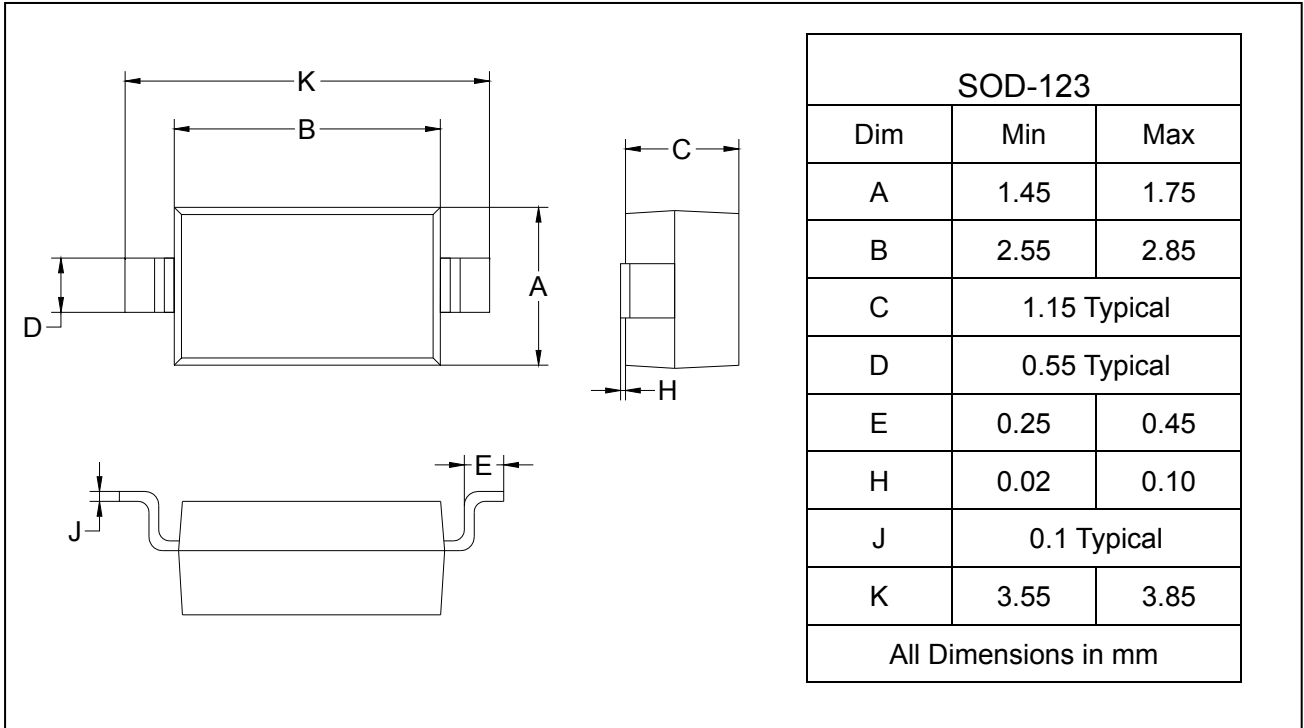


# Surface mount switching diode    **BAV19W/ BAV20W/ BAV21W**

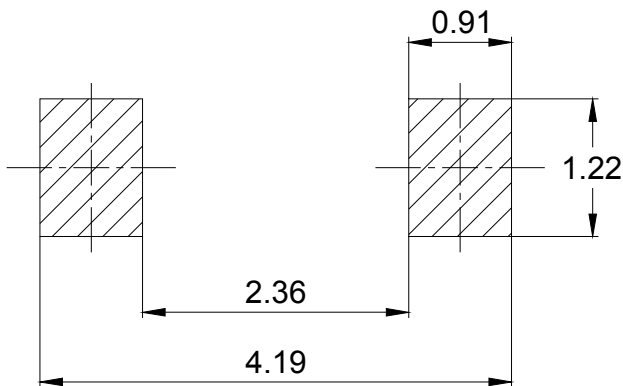
## PACKAGE OUTLINE

Plastic surface mounted package

SOD-123



## SOLDERING FOOTPRINT



Unit: mm

## PACKAGE INFORMATION

Device	Package	Shipping
BAV19W/20W/21W	SOD-123	3000/Tape&Reel