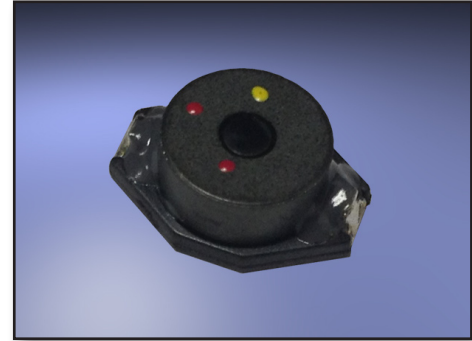


Features :

- Description: SMD shielded power inductor
- Applications: Ideal for high performance DC/DC converter applications, computers, LCD displays and telecommunication equipment. Especially those requiring shielding.
- Operating Temperature: -40°C to +85°C
- Inductance Tolerance: ±20%
- Testing: Inductance is tested on an HP4284A at 100 kHz
- Packaging: Tape & reel, 750pcs / reels.
- Marking: 3 Color Dots or Inductance Code
- Miscellaneous: Magnetically shielded
- Additional info available upon request.



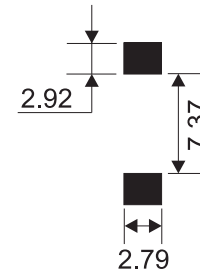
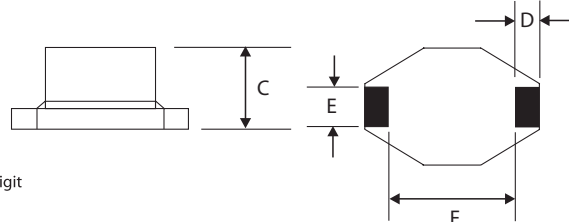
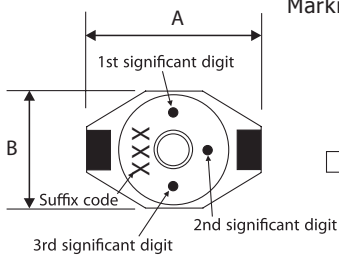
Part Number	Inductance at 100Khz (µH±20%)	DCR Max (Ohms)	SRF Typ. (MHz)	Inductance Rating (µH)	Current Rating (A)	Max Energy Storage (uJoules)	Max. Switch Freq.	Color Code		
AXDT3316P-102	1.0	0.025	60	.50	5.0	9.0	1 MHz	BRN	BLK	RED
AXDT3316P-152	1.5	0.030	55	.70	5.0	12	1 MHz	BRN	GRN	RED
AXDT3316P-222	2.2	0.035	55	1.0	5.0	15	1 MHz	RED	RED	RED
AXDT3316P-332	3.3	0.040	50	1.5	5.0	16	1 MHz	ORG	ORG	RED
AXDT3316P-472	4.7	0.045	45	2.0	3.0	10	1 MHz	YEL	VIO	RED
AXDT3316P-682	6.8	0.050	40	4.0	2.5	14	1 MHz	BLU	GRAY	RED
AXDT3316P-103	10	0.055	35	5.0	2.0	11	1 MHz	BRN	BLK	ORG
AXDT3316P-153	15	0.060	25	6.0	1.8	12	1 MHz	BRN	GRN	ORG
AXDT3316P-223	22	0.084	22	10	1.5	11	1 MHz	RED	RED	ORG
AXDT3316P-333	33	0.090	18	12	1.3	13	1 MHz	ORG	ORG	ORG
AXDT3316P-473	47	0.110	16	27	1.0	13	1 MHz	YEL	VIO	ORG
AXDT3316P-683	68	0.150	12	40	0.90	17	1 MHz	BLU	GRAY	ORG
AXDT3316P-104	100	0.290	9.0	50	0.80	15	1 MHz	BRN	BLK	YEL
AXDT3316P-154	150	0.360	8.0	80	0.60	15	500 KHz	BRN	GRN	YEL
AXDT3316P-224	220	0.390	6.0	90	0.50	10	500 KHz	RED	RED	YEL
AXDT3316P-334	330	0.730	5.0	150	0.40	13	500 KHz	ORG	ORG	YEL
AXDT3316P-474	470	0.880	4.0	200	0.35	13	500 KHz	YEL	VIO	YEL
AXDT3316P-684	680	1.15	3.0	300	0.30	13	500 KHz	BLU	GRAY	YEL
AXDT3316P-105	1000	1.45	2.5	420	0.25	13	500 KHz	BRN	BLK	GRN

Dimensions :

Marking: 3 Color Dots or Inductance Code.

Recommended Land Pattern :

Unit: mm



Color	Code
Black	0
Brown	1
Red	2
Orange	3
Yellow	4
Green	5
Blue	6
Violet	7
Gray	8
White	9

Color Marking: Yellow / Violet / Orange

 1st / 2nd / 3rd
4 / 7 / 3 = 47000nH = 47µH

 Dot 1 and 2 indicate inductance in "nano Henries".
Dot 3 indicates the number of zeroes to be added.

Size	A	B	C	D	E	F
mm	12.95 Max	9.40 Max	5.08 Max	2.54	2.54	7.62
inches	0.510 Max	0.370 Max	0.200 Max	0.100	0.100	0.300

Specifications are subject to change without notice. Customers should verify actual device performance in their specific applications.