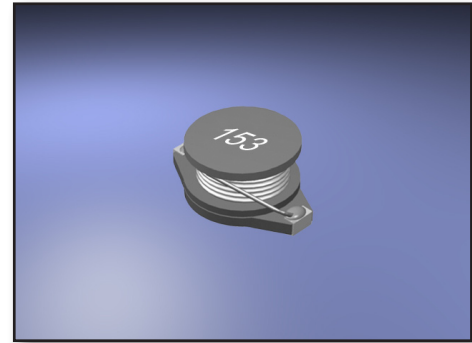
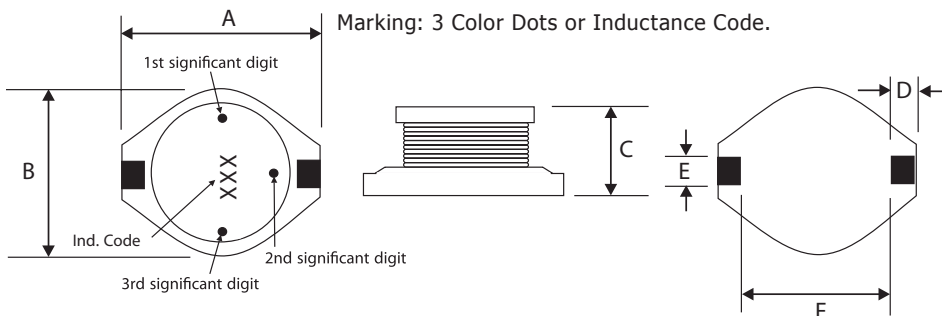


Features :

- Description: SMD power inductor
- Applications: DC/DC converters, computers, LCD displays, telecommunication equipment and PDA palm tops. Designed for the higher current requirements of portable computers
- Operating Temperature: -40°C to +85°C
- Inductance Tolerance: ±20%
- Inductance Drop: 10% typically at Isat
- Testing: Inductance is tested on an HP4284A at 100kHz
- Packaging: Tape & reel, 250pcs / 13" (330mm) reels.
- Marking: 3 Color Dots or Inductance Code.
- Additional info available upon request.



Part Number	Inductance (µH)	L Test Freq. (kHz)	SRF Typ. (MHz)	DCR (Ohms)	Isat (A)	Irms (A)
AXDO5022P-102	1.0	100	80	0.009	20	8.6
AXDO5022P-222	2.2	100	80	0.014	16	7.1
AXDO5022P-332	3.3	100	60	0.018	14	6.2
AXDO5022P-562	5.6	100	40	0.020	12	5.3
AXDO5022P-822	8.2	100	30	0.029	10	4.8
AXDO5022P-103	10	100	30	0.031	10	4.3
AXDO5022P-153	15	100	22	0.036	8.0	4.0
AXDO5022P-223	22	100	20	0.047	7.0	3.5
AXDO5022P-333	33	100	15	0.066	5.5	3.0
AXDO5022P-473	47	100	9	0.086	4.5	2.6
AXDO5022P-683	68	100	8	0.13	3.5	2.3
AXDO5022P-104	100	100	7	0.19	3.0	1.8
AXDO5022P-154	150	100	6	0.25	2.6	1.5
AXDO5022P-224	220	100	5	0.38	2.4	1.2
AXDO5022P-334	330	100	4	0.56	1.9	1.0
AXDO5022P-474	470	100	3	0.85	1.4	0.82
AXDO5022P-684	680	100	2.5	1.1	1.2	0.72
AXDO5022P-105	1000	100	2	1.8	1.0	0.60

Dimensions :


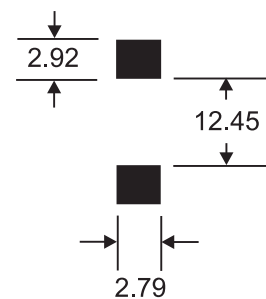
Color Marking: Yellow / Violet / Orange
 1st / 2nd / 3rd
 4 / 7 / 3 = 47000nH = 47µH

Dot 1 and 2 indicate inductance in "nano Henries".
 Dot 3 indicates the number of zeroes to be added.

Size	A	B	C	D	E	F
mm	18.54 Max.	15.24 Max.	7.11 Max.	2.54	2.54	12.7
inches	0.73 Max.	0.6 Max.	0.28 Max.	0.1	0.1	0.5

Recommended Land Pattern :

Unit: mm



Color	Code
Black	0
Brown	1
Red	2
Orange	3
Yellow	4
Green	5
Blue	6
Violet	7
Gray	8
White	9